



**Esgobaeth Llandaf**  
**Diocese of Llandaff**

Mae Ffydd Yn Cyfrif | Faith Matters

# Archdeacon of Morgannwg

A Letter from the Bishop and Job Description



Dear Friend in ministry,

Thank you for your interest in the post of Archdeacon of Morgannwg. We are looking for someone who loves God and who will help me and my team to love and care for all those who seek to nurture and grow the churches here.

We are looking for an experienced priest who understands and can relate across the breadth of Anglican tradition and who will work hard with their colleagues, and with the members of the Bishop's Council, to serve God with gentleness and good humour.

Our ancient and diverse diocese traces a history reaching back to the sixth century and extending geographically to embrace many of the communities of south-east Wales. There is a strong history here of faithfulness in worship, learning, and service which is a precious inheritance. Within the Church in Wales, we are the most populous diocese, and one of our gifts is our range of liturgical and theological tradition.

We have a talented and hard-working body of clergy and lay people who serve the two hundred plus churches that make up our 29 Ministry Areas.

In recent years the transition from various forms of parish and benefice groups to Ministry Areas has demanded much time and attention. The process of re-organisation has called us to try to listen deeply to God and to one another as we seek to live out our faith in ways that serve our communities now. We have also made use of some central church funding for evangelistic projects to explore various ways to promote our faith and to introduce a Christ-shaped way of life to those who are new to the faith. We have not always got things right, and we strive to be humble and open as we continue to access resources and to learn about how God is calling us in discipleship and service today.

Ministering well and faithfully in this context calls for Anglican leadership that is rooted in prayer, committed to on-going formation and learning, and which has a strong pastoral heart. Joy, growth in faith and service, and seeking for wise stewardship of all that God has given is at the heart of our work. If you feel that working in Llandaff might be your vocation, please do make contact to explore this further. For an initial exploratory conversation, you are welcome to contact my chaplain, Revd Emma Ackland ([llandaffchaplain@churchinwales.org.uk](mailto:llandaffchaplain@churchinwales.org.uk)).

With prayers for you, and for all who are discerning their calling,



The Right Reverend Mary Stallard, Bishop of Llandaff



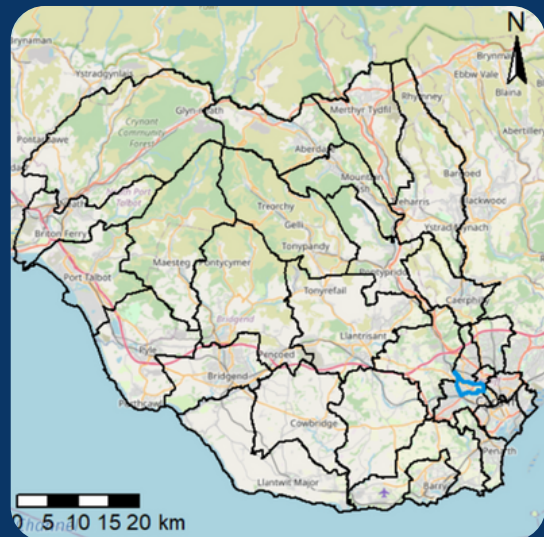


The Diocese is proud of its ancient roots, with Christianity establishing itself here in the 'age of the saints' by the sixth century.

In 1920 the Church in Wales became an independent Anglican province following disestablishment, with Llandaff becoming one of the six dioceses whose life is shaped by the Constitution of the Church in Wales.

Despite the historic strength of church-going and the power of nonconformity in Wales until well into the 19th century, more recent changes in patterns of living and in faith-allegiance have raised significant challenges in the life of the church. The Church in Wales seeks to continue to respond to the call of God to witness faithfully and courageously in our changing context.

The Diocese of Llandaff spans South Wales, encompassing urban, rural, valleys, coastal, industrial, and post-industrial communities, including Cardiff, Port Talbot, Merthyr Tydfil, Barry, Pontypridd, and beyond. As part of the Church in Wales, the diocese operates in a bilingual setting where Welsh language skills are desirable, and a commitment to Welsh culture and language is essential.



In 2012 The Church in Wales adopted a new structure for diocesan life following the acceptance of the 'Harries Report' which introduced a 'Transformation Agenda'. This restructuring saw parochial ministry freshly expressed in Ministry or Mission Areas. Over the past few years, the development of Ministry Areas which seek to be effective, collaborative centres of Christian discipleship and learning with a clear sense of calling and service has been our priority. Our Ministry Areas are groupings, mostly of between 4 and 15 churches served by a ministry team of lay and ordained leaders, usually including up to three stipendiary clergy.

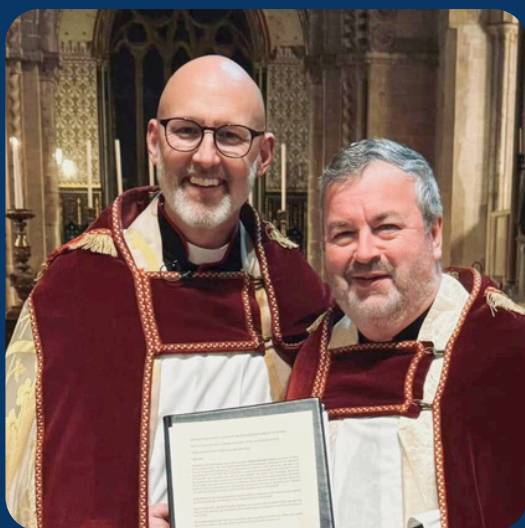
Maintaining an emphasis upon prayer as the heartbeat of church life is vital to us. We hold a strong commitment to strive to be an inclusive Diocese. We are aware of the intense commitment to mature pastoral care that this requires, especially to those who feel themselves to be on the margins.

Nurturing an authentic Welsh Anglican identity, that is faithful to Christ and respectful of the breadth of our tradition calls for care, wisdom, and courage at every level in our leadership.

As we continue to transition into Ministry Area organisation with all the sharing of resources that this requires, and as newer mission initiatives in the diocese develop, the need for deep listening and careful communication is great. It is vital for the Bishop's Council to connect well with all those they serve, to hear needs and concerns and to offer appropriate and careful oversight, affirmation, resourcing, and encouragement.

Traditionally Archdeacons have had a strong role in the shared oversight of finances and buildings. In addition to this clergy, volunteer, and staff well-being are an important priority and this forms a central part of the work of the Archdeacons.

### **Role of the Archdeacon of Morgannwg:**



The Archdeacon of Morgannwg will provide prayerful oversight and leadership, fostering unity and assisting in the ongoing transition to Ministry Areas. This role demands a deep commitment to pastoral care, especially for clergy, lay leaders, and marginalised groups, while upholding the governance, safeguarding, and compliance responsibilities within the diocese.

The Bishop is seeking an Archdeacon who does not shy away from difficulty and is prepared and able to listen deeply during situations of conflict.

The Archdeacon will be a key collaborator in the Bishop's Council, offering wisdom, constructive input, and active participation in diocesan strategy. This role requires someone who can support, challenge, and encourage those they serve, helping to build a resilient and spiritually engaged diocese.

The Bishop is seeking an Archdeacon who finds ministry fulfilling and life-giving, bringing joy to their work despite challenges, and demonstrate this joy naturally in their personal demeanour.



1. **Support the Bishop and the Diocese** – Work collaboratively to cultivate communities of prayer, learning, creative worship, committed discipleship, and transformation. Demonstrate accountability to those they serve with a strong work ethic and energetic approach.



2. **Pastoral Care** – Provide compassionate and proactive support to clergy, their families, and lay leaders, offering encouragement while addressing challenges with empathy and clarity.

3. **Develop and Strengthen Ministry Areas** – Assist in implementing best practices, ensuring alignment with Church in Wales structures and regulations, and fostering innovation and growth.

4. **Encourage Shared Responsibility** – Cultivate a culture where Ministry Areas thrive through mutual support, accountability, and shared leadership.

5. **Engage with Ministry Area Leaders and Councils** – Maintain strong pastoral connections while supporting the strategic direction and governance of Ministry Areas.

6. **Clergy and Lay Leadership Development** – Play an integral role in the recruitment, deployment, and ongoing development of clergy and lay leaders to meet the evolving needs of the diocese.



7. **Champion the Bishop's Vision** – Contribute actively to the strategic goals and mission of the Diocese, ensuring alignment with the Bishop's values and objectives.

## Archdeaconry of Morgannwg:

The Archdeaconry of Morgannwg primarily covers the central part of the diocese, including the Rhondda, Cynon, and Bridgend valleys. The Archdeacon will reside within the Archdeaconry and will play an active role in provincial bodies, collaborating with Welsh archdeacons to strengthen connections across the Church in Wales.

### Person Specification:

- A priest with at least six years of experience in holy orders.
- Deep commitment to prayer, learning, and collaborative teamwork.
- Ability to balance leadership with pastoral care, engaging with challenges while maintaining warmth and approachability.
- A priest who has high levels of resilience and emotional maturity. Is comfortable within a culture of accountability and uses their initiative.
- Can evidence competence in church governance, safeguarding, and compliance, with the ability to provide clear and timely reports.
- A leader who can show that they foster growth, embrace change, and engage in constructive dialogue whilst maintaining a sensitivity for the Ministry Area clergy and all the people of God.
- A strength of character which demonstrates in a willingness to engage in challenging conversations, model faith in action, and encourage spiritual development
- Confident with common IT systems
- The ability and willingness to drive, and the use of a car.



## Key (Essential) Qualities Sought:

- Faithful Priest – A person of spiritual depth and strong faith, dedicated to personal prayer and the sacramental life, with the ability to inspire others in their faith journey.
- Loyal Team Player – Will work with the Bishop in a spirit of mutual loyalty. Committed to shared Anglican vision and episcopal leadership, working with others with mutual respect, and shared purpose.



- Culturally Aware – Deeply respectful of Welsh Anglican traditions, demonstrating a willingness to engage with and celebrate the cultural and linguistic heritage of Wales. A Welsh speaker or a commitment to learning Welsh.
- Constructive Dissenter – Able to offer differing views with kindness and openness, engaging in respectful and productive discussions to strengthen the church's mission and decision-making processes.
- Encourager – A source of hope and motivation, fostering spiritual and personal growth in others, and bringing enthusiasm and optimism even in times of challenge.
- Bridge-Builder – Skilled in fostering understanding and unity across different theological perspectives, church traditions, and community contexts, advocating for transformation while valuing the diverse expressions of church life.

### Terms of Service:

Appointed by and accountable to the Bishop of Llandaff.  
Works collaboratively with other Archdeacons and the Bishop's Council.

Stipend

Pension

This role is vital in leading and supporting a diverse, evolving church that seeks to be faithful, inclusive, and transformative in its mission.

The successful candidate will bring wisdom, humility, and a commitment to joyful service.

